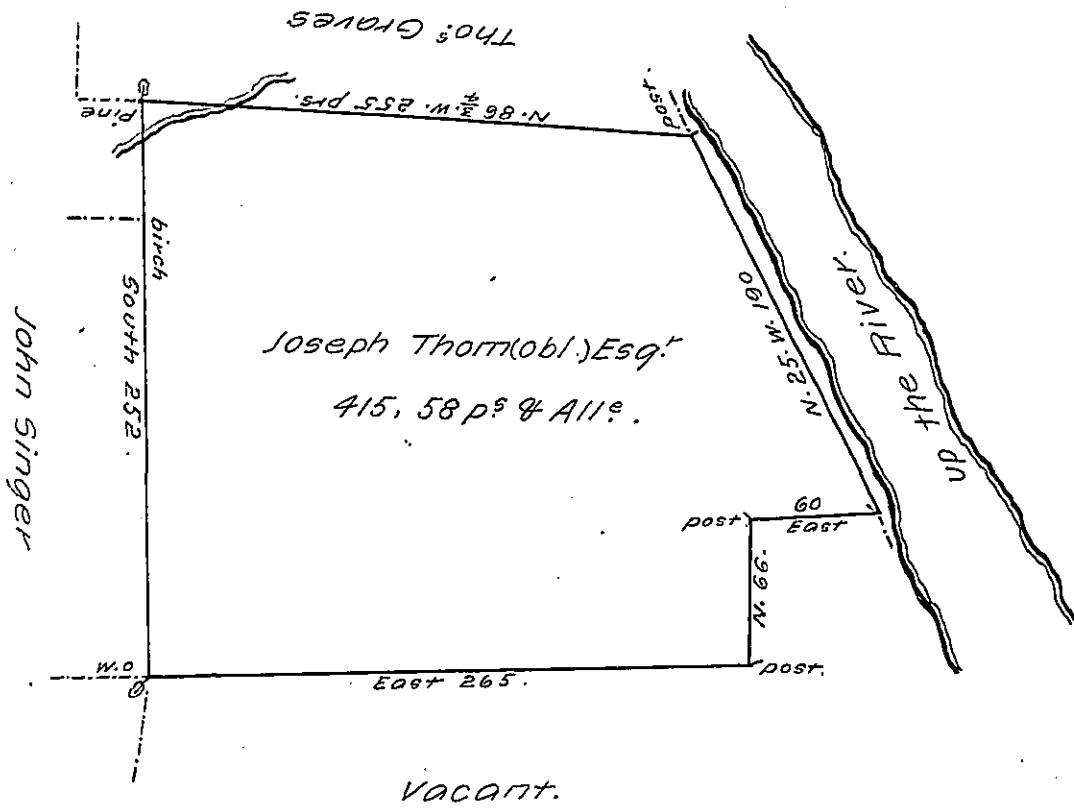


Augusta Lotman



By Virtue of a Warrant dated 19<sup>th</sup> August 1794 Surveyed  
 the fifteenth day of September 1794 Unto Joseph Thomas Esq.  
 (# B 1.) described Tract of Four hundred and fifteen  
 Acres & 58 perches of Land & Allowance Situated to the  
 West side of the North branch of Sasquehanna River about  
 four miles below Bowmans Creek in Luzerne County.

By W<sup>m</sup> Montgomery D. S<sup>r</sup>

To Daniel Brodhead Esq.  
 Surv<sup>r</sup> Gen<sup>l</sup> of Pennsylvania.

N- 2

IN TESTIMONY that the above is a copy of the original remaining on file in  
 the Department of Internal Affairs of Pennsylvania, made  
 conformably to an Act of Assembly approved the 16th day of  
 February, 1833, I have hereunto set my Hand and caused  
 the Seal of said Department to be affixed at Harrisburg,  
 this third day of April 1907.

*Loach N. Brown*  
 Secretary of Internal Affairs.